



# MISSOURI ENVIRONMENTAL EDUCATION ASSOCIATION



*2020 Annual Report*

P.O. Box 220983  
Saint Louis, MO 63122

<https://meeea.org>

# MAJOR ACCOMPLISHMENTS

## 6300 Outdoor Learning Kits

MEEA facilitated this project to provide hands-on activity kits to families in need via the COVID-19 food relief efforts of Operation Food Search and the St. Louis County Library. The St. Louis Zoo provided space to store and assemble the materials, as well as staff time to assist with assembly.

- 3 themes: Nature Play, Observation & Nature Journaling, Food & Pollinators
- 20 partners curated, assembled, and delivered 6300 kits



# Re-branding MEEA and MGS

- New websites for MEEA and Missouri Green Schools
  - MGS website embedded in MEEA website
  - MGS old URL set to redirect to current site
- New logos for MEEA and MGS
  - MGS logo set includes badges for each recognition level



## MISSOURI GREEN SCHOOLS LOGO GUIDE

Use this guide as you start to use the Missouri Green Schools logo in materials, communications and other resources! Where possible, use the full horizontal logo for best legibility.

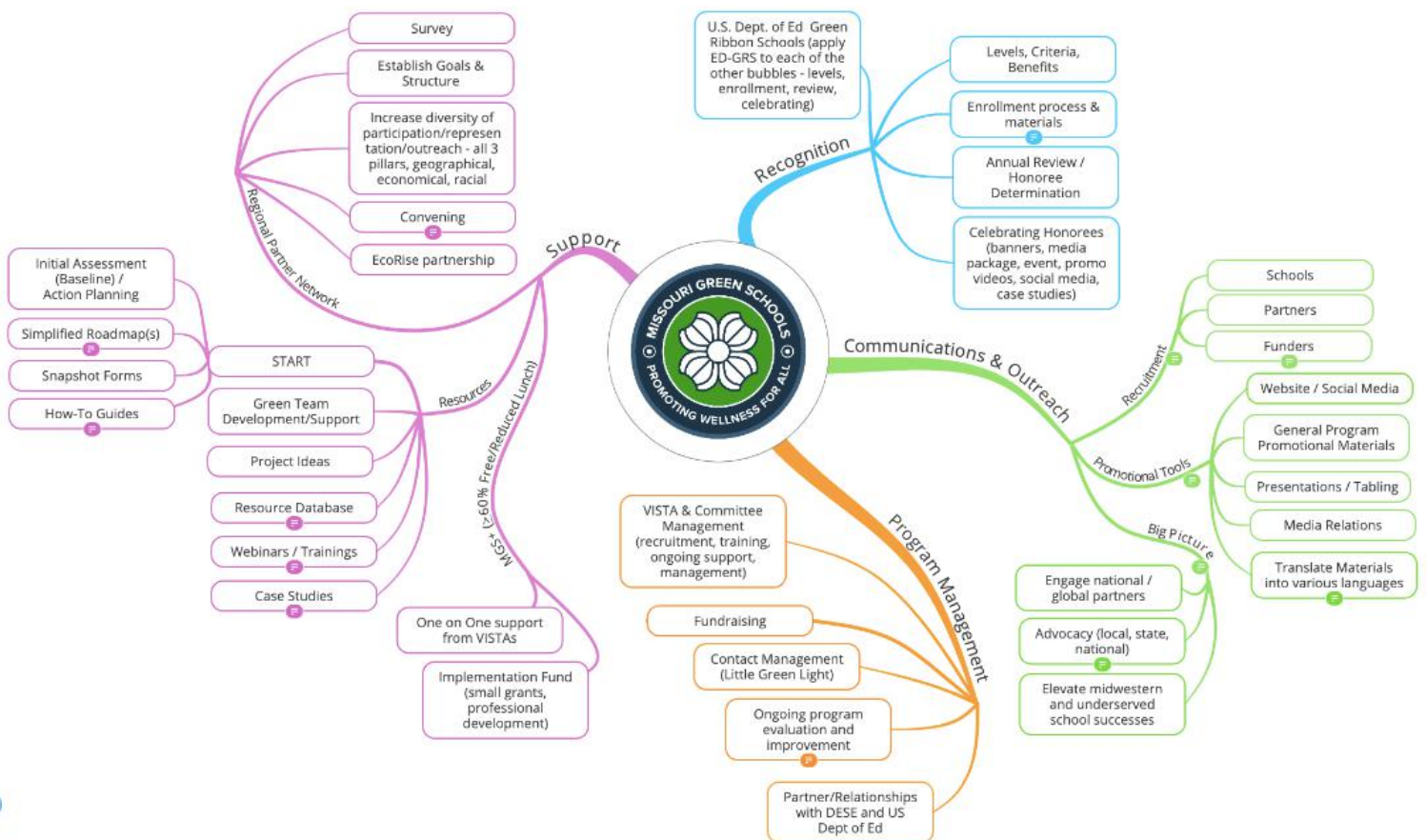
### LOGO VARIATIONS



# Missouri Green Schools: Continuing as EDGRS Conduit and Statewide Program Launch

- 3 Missouri schools selected for the US Department of Education Green Ribbon Schools (EDGRS) award
- Official Launch of statewide recognition program, 6 schools enrolled
- 4 Americorps VISTAs joined the team to provide support for under-resourced schools
- Partner Network development in progress
  - held meetings 2 and 3 (out of four development meetings total)
    - both virtual, average of 35 participants at each meeting
  - began collecting partner survey data for searchable resource database to be housed on the MGS website

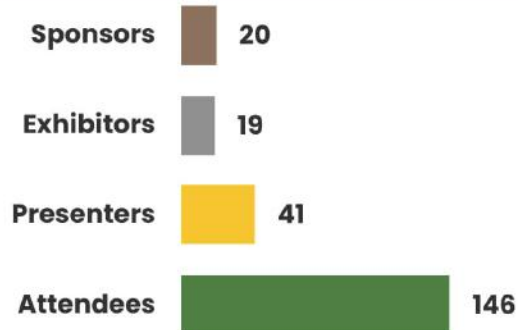
The MGS team is comprised of MEEA staff, a US Green Building Council Missouri Gateway Chapter staff member, the VISTAs, and an active committee. Because of this group of folks, many of the pieces of the "Mind Map" below are in progress or completed.



# Our First Virtual Conference

## 2020 Kansas & Missouri Environmental Education Conference

Two Neighboring States Collaborating



Students impacted by our attendees each year!

"Incredible people doing incredible things for education, with amazing resources, that truly want to help you do the same!"

### Relevant

100% of attendees say the conference was relevant to their professional development needs

"I enjoyed learning about the various projects and programs happening around Kansas and Missouri that impact our youth, communities, and environment in a positive way!"

### Fun

#### 5 Socials

A variety of nightly social events from an educational Escape Room challenge to a movie screening to a Forager's Cooking Class

Thank you for making time in front of the computer worth the time and effort. The social events were a fantastic addition!

### Enriching

"The KACEE/MEEA Conference this year has been an absolute high point in being able to connect with environmental educators across two states. In a year that has lacked so much connection with others, this was one of the few times that it was really easy to remember that we are not alone in our work."

I LOVE THE KEYNOTE SPEAKERS!!!! They turned my outlook around for 2021. I can't even explain the difference they made in my personal outlook.

Parker McMullen Bushman



### Founder

Ecoinclusive, KWEEN Werk, and Co-Founder of Inclusive Journeys

Judy Braus



### Director

The North American Association for Environmental Education

# Conference (Cont'd)

96% of attendees want us to repeat this collaboration  
*So we are thinking we'll do it every third year!*



See you at our next  
"Conference Collab" in 2023!

## Special thanks to our sponsors for helping to make this event affordable to educators!

City of Springfield Dept. of Environmental Services  
Kansas Department of Wildlife, Parks & Tourism  
Every Green Team ~ Greenscapes Gardens ~ Kansas Department of Agriculture  
Kansas Department of Health & Environment, Bureau of Environmental Field Services,  
Watershed Management Section  
Kansas Forest Service ~ Kansas State University, The GeoCat Project  
Acorn Naturalists ~ Franklin County Conservation District  
Friends of the KAW ~ Kansas Water Office  
Integrated Facility Services ~ Missouri Master Naturalists  
Trailnet ~ Wilson County Conservation District  
Butler County Conservation District ~ Cowley County Conservation District  
Kansas Grassfed Beef Company

# HOW DID WE DO ALL THIS?

## 2 BOARDS

**Board of Directors**--working board, each member assists on at least one committee

**Advisory Board**--formed in 2020, tasked with creation and implementation of Fund Development Plan, priorities can shift as needed

## 2 STAFF MEMBERS

**Lesli Moylan**, Executive Director, .75 FTE

**Nick Speed**, Outreach Coordinator, .15 FTE

- Nick joined the team in August 2020

## 4 AMERICORPS VISTAS

Began in September 2020

Missouri Green Schools program development and one-on-one support for under-resourced schools enrolled in the program

## 1 WORK GROUP

COVID-19 response to provide Outdoor Learning Kits to families needing emergency food relief. It is our hope that these projects introduced the many benefits of nature to families in crisis.

## 3 COMMITTEES

- Missouri Green Schools
- Conference
- Website

## 64 VOLUNTEERS

Over **2000 hours** logged. This is an underestimate, and we plan to do a better job of tracking this in 2021!

What we know for sure--we couldn't have done any of this without our amazing volunteers!

**AND A SPECIAL THANKS TO OUR  
FINANCIAL SUPPORTERS FOR  
MAKING A DIFFERENCE IN MISSOURI!**

Anonymous Donors  
City of Springfield Environmental Services  
Community Foundation of St. Louis  
Deborah Barker  
Susan Flowers  
Friends of the Zoo  
Gateway Greening  
Greenscape Gardens  
Erin Graves  
Sarah Holmes  
Integrated Facilities Services  
Nikki Lemley  
Kate Mazejka  
Connie McPheeters  
Jenny and Alex McPheeters

Katherine McPheeters  
Missouri Foundation for Health  
Missouri Master Naturalists--  
*Springfield Plateau Chapter*  
Kyle and Lesli Moylan  
NAAEE  
Wilford Pinkney  
Lizzy and Dave Rickard  
Bill and Joan Ruppert  
Nancy Sanders  
Laura Seger  
St. Louis County Libraries Foundation  
St. Louis Zoo  
Sugarcreek Gardens  
Jan Weaver  
Amy Wood

Our membership has grown to include  
more than 650 individuals and 16 organizations.  
We are proud to serve and support you,  
and we look forward to  
continued collaborative efforts in 2021!